

Shells

The most prevalent types on this stretch of sand are the cut trough shell and the American jack-knife clam. This sort was accidentally introduced into the German Bight at Helgoland and in just a short time has spread from there along the European coast.

The shells with brown, blue or grey stripes are old or fossilised examples of the cut trough shell. There are also mainly cockles, Rayed trough shell, Venus clams, banded wedge shells, Baltic tellin and whelk eggs.



Rayed trough shell

Banded wedge shell

whelk eggs

With an easterly wind, sea snails, such as the common wentletrap, and thin tellin wash in. They lie in "black beds" formed by black necklace shells. These are places for exceptional finds.

Jellyfish

Not all the jellyfish that are found on the Dutch coast sting. But look out when there is an easterly wind. The blue jellyfish and compass jellyfish then drift towards the shore. The former looks like a bright blue coloured jelly dessert. Their long tentacles can give a nasty sting.

The compass jellyfish has v-shaped stripes on its head. Its stings are not severe. There are also the harmless common jellyfish, sea gooseberry and rhizostome jellyfish.

What to do if you are stung by a jellyfish:

- use insect bite treatments
- dab with table vinegar
- use hot bandages, if possible with table vinegar
- never wash the sting with salt water, this makes it worse



blue jellyfish

compass jellyfish

common jellyfish

sea gooseberry



Coast & Sea Walk Noordwijk



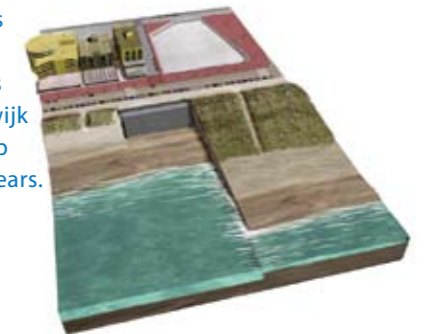
- Lighthouse • Sand drift
- Dune bushes • Houwaarder dune
- Kachel dune • Beach ridge • Beach



Hoogheemraadschap van Rijnland

The Rijnland District Water Control Board keeps feet dry and provides clean water. Since the western part of the Netherlands is almost entirely below sea level, the dunes are extremely important. They keep the sea out, of course! Due to climate changes, the sea level is rising. This makes it necessary to strengthen the coastline.

Rijnland has done this at Noordwijk by laying a dike in the dunes along the Koningin Wilhemina Boulevard to past the Vuurtorenplein (Lighthouse Square). For this, Rijnland excavated the old dune and created a temporary emergency dike. After constructing this dike, it was covered with sand and a new dune section created that is some 42 metres wider than was the case in the old situation. This dike has to ensure that Noordwijk and the Randstad keep dry for the next fifty years.



Crabs and lobsters



Pennant's swimming crab

The Pennant's swimming crab is at its northernmost geographical limit in the Netherlands and has a pear-shaped shell.



shore crab

The shore crab is mainly a waste and carrion eater. The shore crab does not have any swimming legs, such as the Pennant's swimming crab and flying crab.

To protect themselves against enemies, hermit crabs use an abandoned snail shell as a suit of armour. The head, the walking feet and the robust claws protrude from the opening. They take their shell with them wherever they go.



hermit crab



flying crab

The flying crab is the most prevalent type on the Dutch coast.

Coastal birds

The herring gull is the most widely known of the coastal birds. Young herring gulls are brown in colour and become whiter and whiter as they grow older. Only in its fifth year is the herring gull full-grown with a completely white plumage, grey back, yellow beak with the familiar red spot and a yellow iris.

The great black-backed gull is mainly a winter guest. The great black-backed gull has a black plumage and pink feet. The lesser black-backed gull has a dark grey plumage and yellow feet. This gull can be seen on the beach from the start of March through to November.

Gulls eat anything, from small fish that they can get when the fisherman haul up their nets and earthworms inland even to tired migratory birds such as the blackbird and meadow pipit. Gulls now mainly breed on the roofs of buildings. In Noordwijk, this is mostly on the ESA/Estec and Willem van den Bergh buildings.

The sanderlings often run in large groups with the ebbing and flowing waves in search of small crustaceans and shellfish.



herring gull

Sanderling

Colophon

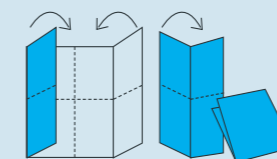
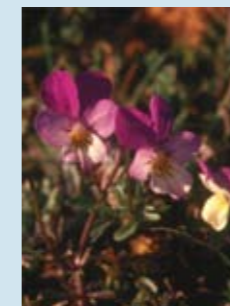
Editor and Publisher
De Kustvereniging, Leiden
Postbus 11232, 2301 EE Leiden
www.kustvereniging.nl



Text
Kustvereniging

With thanks to
Jelle van Dijk (Natuur- en Vogelvereniging Noordwijk)

Photographs
Mat Vestjens
Anne Frijsinger
Ellen van der Niet
Robert Steenbergen
Marijke Kooijman
Colinda Vergeer



The Coast&Sea Noordwijk walk was partly made possible by contributions from the Fonds1818 and the Ministry of Agriculture, Nature and Food Quality.

© Kustvereniging, 2008

Fonds 1818



landbouw, natuur en voedselkwaliteit

Natural Noordwijk



Blooming seaside resort Noordwijk is proud to belong to the select company of local authorities with the rare combination of the Blue Flag and QualityCoast Awards and is literally a district with many faces. For visitors (and inhabitants) who love to walk and/or cycle, there is a varied pallet to choose from. For culture and history, a glimpse at the rustic Inner Noordwijk is highly recommended. In Noordwijk on Sea, the unique coastal defence reinforcement "dike in dune" has been completed. This is certainly something to stop and pause at if you point your walking shoes or bicycle wheels in the direction of the beach.

If you want to more about the green character of Noordwijk, you should take a look at the website www.strandloper.nl or at the website www.noordwijk.nl. If you then click on 'natuur & milieu' ('nature & environment') on this local authority website, it is possible to gain an extensive view of the Noordwijk nature area. It will then become immediately clear what is meant by 'Natural Noordwijk', and what is meant is naturally Noordwijk.

For more events and activities in Noordwijk, please visit Noordwijk Marketing at www.noordwijk.info



ROUTE DESCRIPTION

1 Vuurtorenplein (Lighthouse Square):

To the northeast of the lighthouse, enter the Bosweg. At mushroom sign 23221, turn left onto the footpath. At the junction turn right along the Staatsbosbeheer information board, cross the cycle and bridle path. At the T-junction, turn left and then immediately right into the sand drifts.

2 Sand drifts

The nutrient-rich layer that was introduced here for the greens of the "Oude Golf" golf course was excavated in the nineties by Staatsbosbeheer and the Noordwijk council to restore the original dune. The dune may again shift. This means that the dune tops have again been overgrown with helm. In the sand, the tracks of the animals that live here are readily seen; roe deer, fallow deer, fox and rabbit, as well as dog and human foot prints.



Deer track

At the crossroads turn left. At the triple-fork go straight on, over the small hill, turn left before the cycle path (blue poles).



3 Dune shrubs

On the inland side is the bush and shrub border to the dunes: low trees (oak, beech, sycamore, white poplar) and shrubs. Most shrubs bear red berries: sea-buckthorn, spindle tree, barberry, ramanas rose, dog rose and hawthorn. These plants provide sustenance and cover to birds such as the willow warbler, nightingale and white throat.



Dog rose

Barberry

At the Zeeweg, mushroom sign 21589/001, cross the cycle path. Turn left and follow blue poles.

4 Back to the sea; open dune

In the direction of the sea, the vegetation is lower (privets, elder and oak) and the dune open. Many wild pansies.

5 Blue and yellow flowers

From May to October, the exuberantly blooming yellow and blue plants are striking. They are biennials. The first year, they grow as rosettes. The various rosettes are readily seen in most areas. The following year, they produce long stalks with many and very outstanding flowers. They attract insects with these for pollination. We see many yellow evening primroses, as well as yellow mulleins and tansy ragwort. Many blue biennials occur in this area: viper's bugloss, hound's tongue, alkanet and bugloss.



Cinnabar moth caterpillar



Bugloss

Evening primrose

6 First viewpoint, bushes and shrubs

Many animals live in the cover of the bushes and shrubs. Rabbits, foxes, roes and fallow deer can be spotted here.



Roe deer

Sand-hill screw-moss and reindeer lichen

Keep following the path, at the crossing cross the bridle path and footpath, keep following the blue poles. At the T-junction, turn left and follow the blue poles (again in the direction of the sea Fazantenslag), at next T-junction turn right and follow blue poles. Enter Oorlogsweg. At beach entrance 23 turn right. After 80 m turn right up the steps.



Noordwijk has obtained the international QualityCoast Award for sustainable tourism. This regards the municipality as a whole.

Ticks

Always check yourself well for ticks, before going to bed for example. If you find a tick, twist it off with a tick-pen or tweezers and take note of the date and place. Go to the doctor if a red ring appears or if you feel unwell, and report the tick. The tick is a transmitter of Lyme's disease. Blood tests can reveal Lyme's disease. The disease is in general readily curable with antibiotics.

Regional information

Coast&Sea Walk

Noordwijk

The dune landscape to the north of Noordwijk is mainly an open and dry dune. There is a spectacular artificial shifting dune area, the result of a nature restoration project in the nineties. At the start of the last century, pines were planted in the whole area to stop the dunes shifting. Of these there still remains a pine forest and there are also scattered pine trees. From viewpoints you have a view over the dune, the North Sea, Noordwijk, the surrounding villages and the bulb fields. From here you can also see deer and foxes in the beach ridge.

Accessibility

Vuurtorenplein: bus 40 and 42 from Leiden Central Station, Interliner 95 from Den Haag CS Station and bus 90 from Haarlem Station or Den Haag CS.

Route description

The walk goes through the dunes via the sand drifts, dune forest, three viewpoints, open dune and pine forest to the transition to the beach at the Duindamseslag and back over the beach. The whole walk is 12 km and takes 3 hours. The walk starts and ends at the Vuurtorenplein in Noordwijk.

The route is not suitable for pushchairs.



7 Houwaarder dune

From the Houwaarder dune is a panoramic view over the dunes towards Noordwijk, the towers of Noordwijk, pine forest and the sea. To the north, Zandvoort and the smoke plumes of IJmuiden can be seen, and on the dune tops you will see blowouts. You are then looking towards the south (-west), the prevailing wind direction.

Go down via the steep steps, straight on over the road, turn left at T-junction. At the first T-junction go straight on, but at the second turn left.



8 Pine forest and dune forest

From the start of the twentieth century, Staatsbosbeheer has planted pine trees to prevent erosion. When in 1963 the pine shoot beetle appeared, many pine trees were cleared. There now remains a small pine forest and the true dune forest is returning; oak, beech, elm and sycamore, with honeysuckle. From the gnawed pinecones you recognise the animals that live here; squirrels and the great spotted woodpecker.

At the T-junction, go straight on (do not follow the green poles), at the next T-junction turn right. You are now walking in the open dunes again. At the crossing, turn left (green poles).

9 Sand-hill screw-moss, winter decoration

In the winter, the fresh green mossy areas are especially striking. Also on scorching hot summer days, the sand-hill screw-moss is bright and fresh looking early in the morning due to the dew from the humid sea air.

Cross the cycle path. You are now walking along the Duindoornweg. At the T-junction, turn left. After 100 m turn left up the steps of the Kachel dune.

10 Kachel dune viewpoint 29 m

The form of the dune and the bushes are determined by the wind from the sea.

Leave the Kachel dune and turn right onto the Oorlogsweg.

11 Oorlogsweg

This road was used in WWII to transport materials for the bunkers. Towards the sea is a deep and wide overgrown valley of the beach ridge, habitat of deer and fox. Next to the path grow mosses and lichen, such as the reindeer lichen. On the other side is the open dune.

Go straight on to the bicycle racks, turn left in the direction of the sea, across the Duindamseslag.

ROUTE GOES BACK TO NOORDWIJK ALONG THE BEACH